

HP LaserJet Managed MFP E800 Series



Powerful performance
so work flows faster



Unleash
peak productivity



HP WOLF SECURITY

Always on guard with
HP Wolf Security¹



Next-generation Flow
technology

Unleash peak productivity

Now, you can accelerate your print and scan workflows to maximize business productivity, with the HP LaserJet Managed MFP E800 series. The result: More time for your core business and less time waiting for prints and scans.



POWERED BY SYSTEM ON A CHIP

With 7x more compute power² than previous models, the HP LaserJet Managed MFP E800 series is a powerhouse of speed with all print, copy, scan, security, and other display subsystems integrated into a single chip.



PRINT OR COPY VIRTUALLY EVERY DOCUMENT AT FULL SPEED

Now, virtually every document can be copied or printed at full-engine speed to meet high-productivity demands. What's more, the automated document feeder (ADF) features HP's Reverse and Retry technology⁴ so you can continue to work while your scan and copy jobs are running.



UP TO 70PPM PRINTING SPEED³

Meet tight deadlines, save time on everyday printing tasks, and be ready for unexpected multi-print requests. HP delivers the speed needed for maximum productivity.



FAST SLEEP TO FIRST COPY OUTPUT TIME (FCOT)

Compared to previous generation printers, the HP LaserJet Managed MFP E800 series features accelerated FCOT time so your printer wakes up quickly from sleep mode as soon as you use the touchscreen to deliver your prints or copies faster.



10.1-INCH COLOR TOUCHSCREEN DISPLAY

Experience the ultimate in productivity with a vivid and intuitive display that helps make the HP LaserJet Managed MFP E800 series easy to use, no matter how you use your MFP.



Do more with next-generation Flow technology

Businesses grow and evolve, so should your MFP. The next-generation of HP Flow technology makes that possible. Its cloud-based software provides flexible, customized cloud-connected solutions to help optimize your print and scan workflows – today and as they change in the future.

REVERSE & RETRY TECHNOLOGY⁴

Innovative Reverse and Retry technology⁴ detects and resolves double feed issues. Minimizing multi-feed errors reduces paper jams and frustration while enhancing workflows.

ONE SCAN. MULTIPLE DESTINATIONS.

Sending documents to recipients in multiple destinations with multiple delivery requirements? Not a problem. With HP Flow technology, you can scan once and simply manage your files with the color touchscreen for customized delivery options for each recipient – email, fax, SharePoint, and even print a paper copy⁵. HP saves you time and does it all in just one scan operation.

CUSTOMIZED DIGITAL EDITING OF SCANNED DOCUMENTS

With HP Flow technology, you can digitally edit and personalize copies of the original using direct manipulation of scanned content at the MFP. Use the 10.1-inch color touchscreen display to edit, markup, redact, and highlight comments for recipients.

FAST DUPLEX SCANNING

Keep pace with demand for digital documentation with fast 300 ipm⁶, duplex scanning, and enhanced OCR capabilities. Plus, you can further increase performance with the optional optional Workflow accelerator card.⁵

SCAN SMARTER. LOAD AND GO.

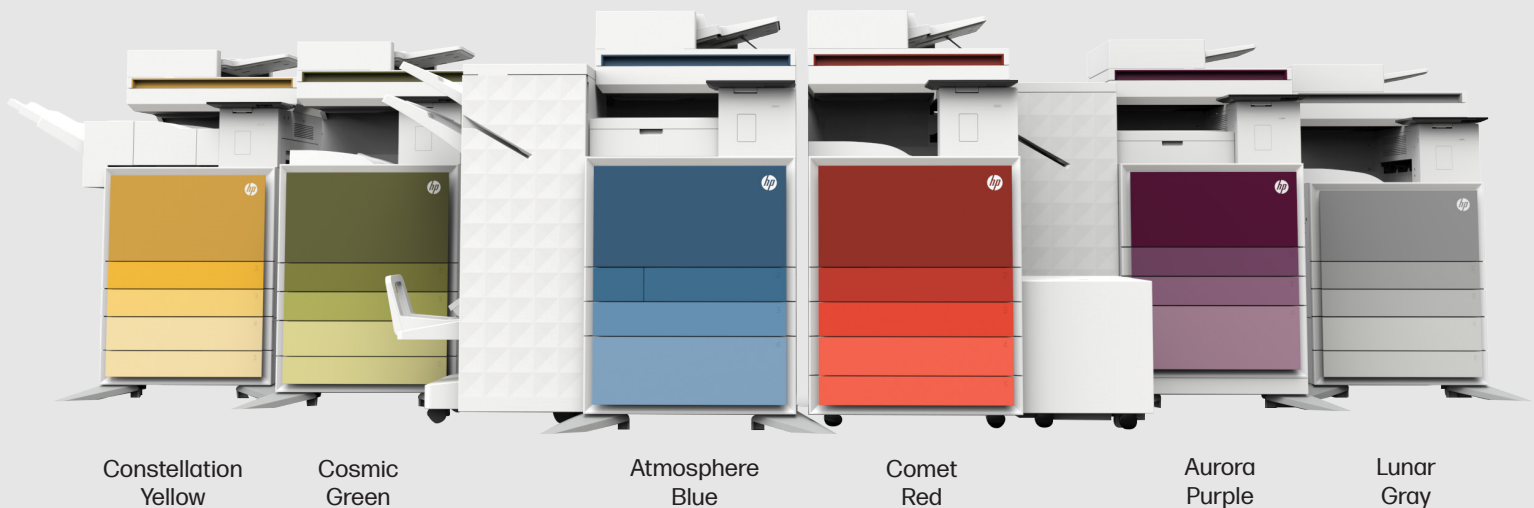
HP Flow's auto-sensing technology feature is your silent digital workflow assistant. Smart auto-sensing does it all – from picking the best image quality based on type (text or photo) and paper tone/color, to detecting two-sided prints, and automatic separation of scan jobs.

The result: Higher productivity and job management accuracy along with professional- looking prints that

Designed for impact

Today's workplace is more open and fluid, helping foster collaboration and communication among team members. Your HP printer can play a key role.

Make a visual statement at your workplace with six distinct, easy-to-install color panels⁷ to suit your office décor, represent your brand and energize your space.



Better printing for a better planet

Save resources with our energy efficient printing that meets EPEAT Gold, Blue Angel, and Energy Star standards⁸, supporting HP's goal for carbon neutrality and a fully sustainable economy.

- **SUPPORT ZERO DEFORESTATION⁹** - The fiber-based packaging, including the outer box and interior fiber-based cushions, for this product is 100% sustainably sourced, meaning it's made from, recycled or certified content.
- **DESIGNED TO ELIMINATE WASTE¹⁰** - Our devices are made with the planet in mind with energy-efficient printing and toner cartridges with more than 59% recycled cartridge content¹¹ and 90% recycled packaging content. Printing that puts the planet first.
- **BREAKTHROUGH TONER TECHNOLOGY** - With formulas that meet current indoor air quality standards, our ultra-low melt toner is efficient for both printing and the planet.¹²
- **REDUCE PAPER WASTE** - By using HP Pull/Pin printing solutions and duplex print as the default¹³ setting our devices conserve paper wherever possible.
- **EXTEND PRODUCT LIFE** - Our durable modular designs and HP SDS predictive diagnostics helps to keep our products up and running longer.
- **EASY RECYCLING WITH HP PLANET PARTNERS¹⁴** - Our sustainable efforts don't stop when you stop printing. With HP Planet Partners, we provide a convenient way to recycle HP IT hardware and supplies after use.



Always on guard with HP Wolf Security

HP Managed MFPs are the world's most secure printing devices¹⁵ in the industry. They're always on the lookout, continually stopping threats while adapting to new ones. Only HP printers can automatically self-heal from attacks, so IT doesn't need to intervene. For peace of mind, HP Wolf Enterprise Security is included with every HP LaserJet Managed MFP E800 Series so you can feel protected whether you are collaborating, on premise, or via the cloud.

ALWAYS-ON PROTECTION

- HP Sure Start checks the BIOS/boot code at start up to validate the integrity of the BIOS code
- Memory Shield™ active system monitoring with expanded memory protection from malware injection attacks
- HP Connection Inspector inspects outgoing network connections to stop suspicious requests like malware
- Whitelisting checks firmware during startup to help ensure it's authentic, good code—digitally signed by HP
- Receive instant notification of security issues via leading Security Information and Event Management (SIEM) tools like Splunk, ArcSight, McAfee, and SIEMonster

ALWAYS-ON DETECTION

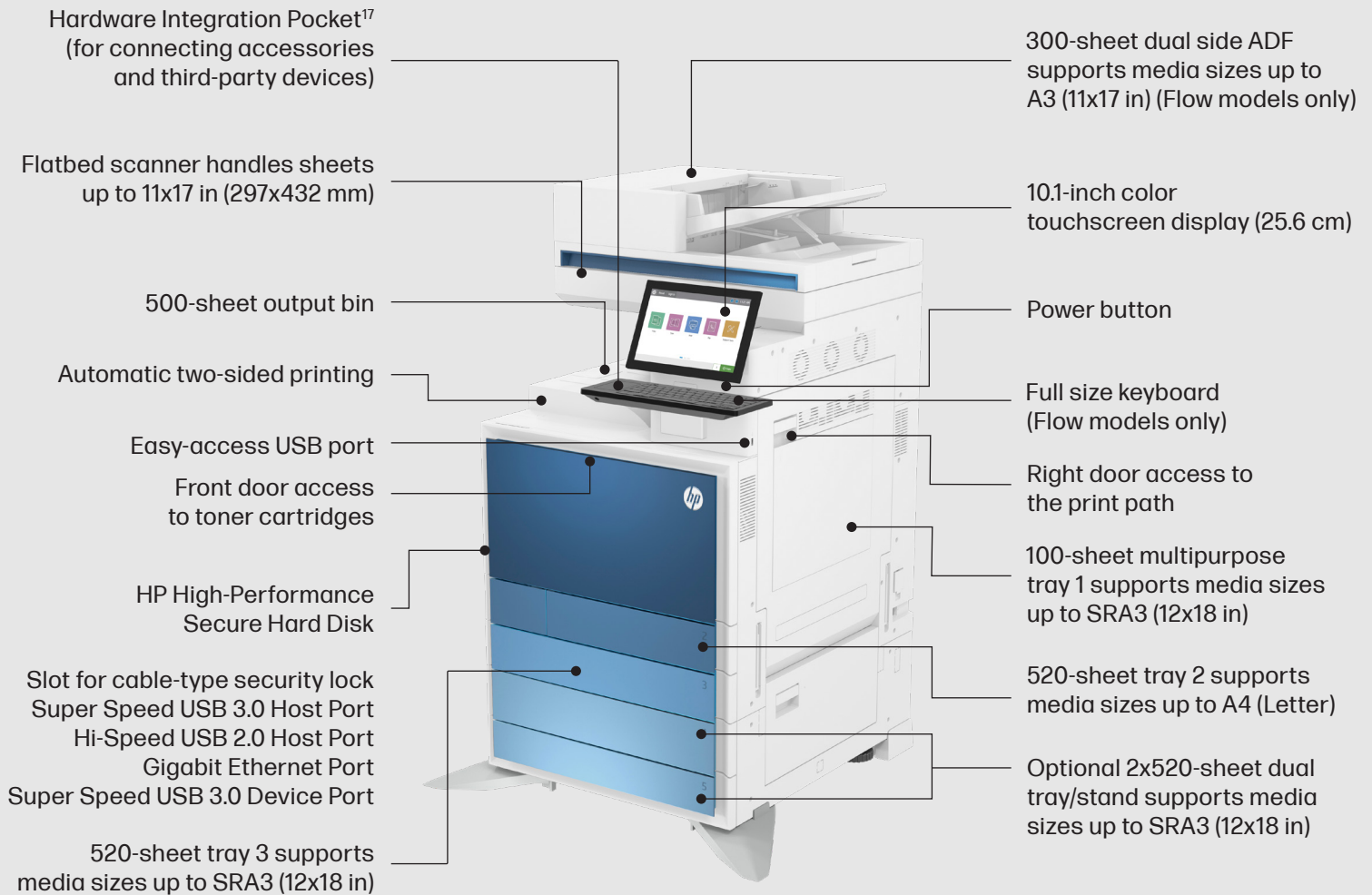
- Protects with zero-day detection of threats
- Prevents malware attacks by ensuring that the execution flow on the device cannot be altered
- Monitors the execution flow for potential zero-day attacks with Control Flow Integrity
- Self-heals and reboots to a safe state of operation when malware is detected
- Detects attacks in runtime memory via an integrated chip that provides hardware-level protection

ENTERPRISE-WIDE SECURITY

HP Security Manager¹⁶ offers an effective, policy-based approach to help secure HP printing and imaging devices. Easily set security configuration policies and automatically validate settings for every HP printer and MFP in your fleet.

Get to know the HP LaserJet Managed MFP E877 series

HP Color LaserJet Managed Flow MFP E877z shown



Series at a glance



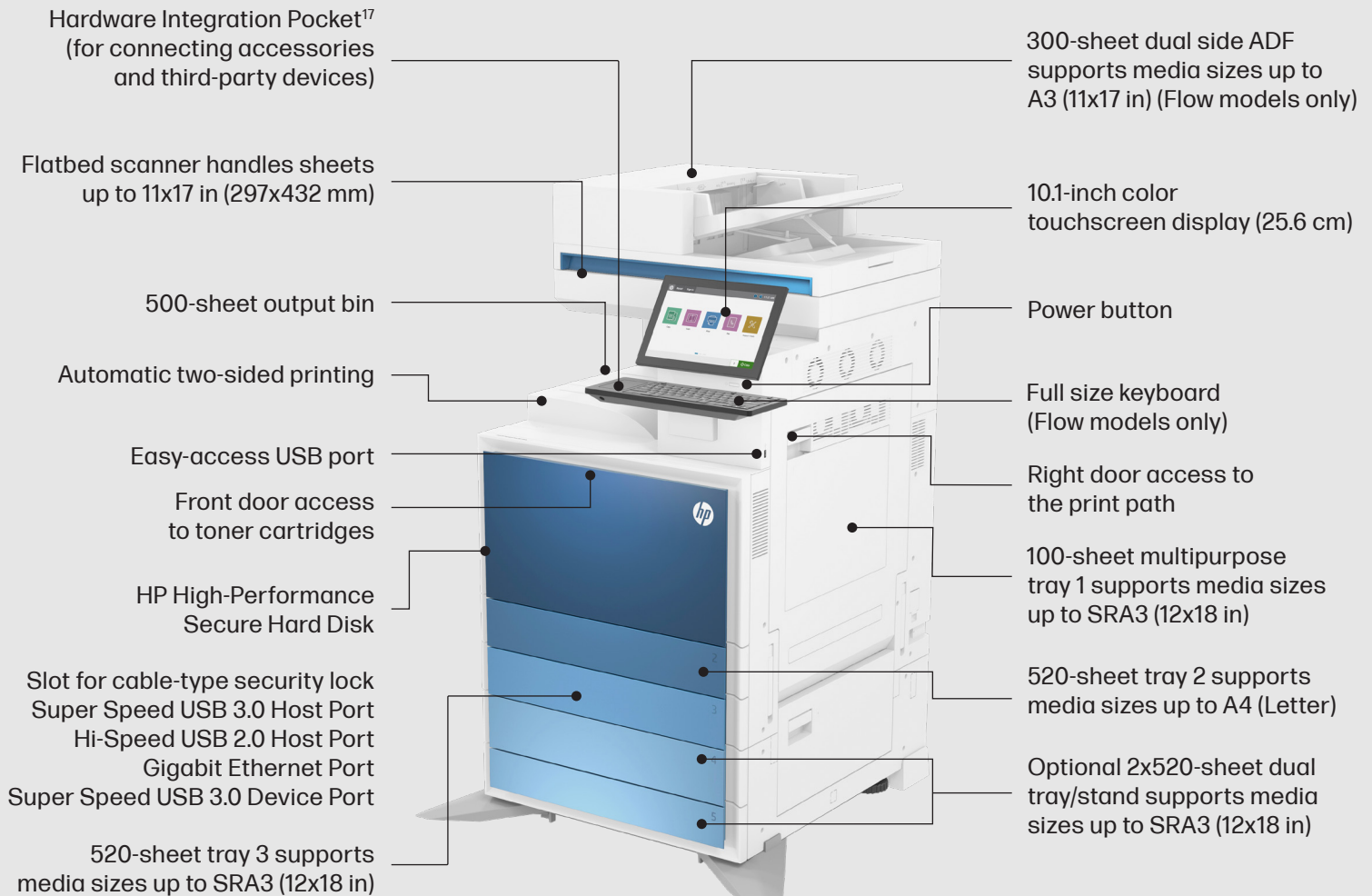
Model	Flow MFP E877z 40ppm	Flow MFP E877z 50ppm	Flow MFP E877z 60ppm	Flow MFP E877z 70ppm
Product number	5QK08A	5QK08A (Base) + 8EP60AAE (Speed license)	5QK08A (Base) + 8EP61AAE (Speed license)	5QK08A (Base) + 8EP62AAE (Speed license)
Functions	Print, copy, and scan (fax and wireless optional) (all models)			
Print speed (A4 and letter, black, and color)	Up to 40 ppm	Up to 50 ppm	Up to 60 ppm	Up to 70 ppm
Scan speed (A4 and letter, black, and color)	150 ppm/300 ipm, simplex/duplex			
ADF capacity	300 sheets			
Input capacity	Standard: 1,140 sheets; Maximum: 6,140 sheets (all models)			
Advanced workflow features	HP EveryPage technology, ¹⁸ full size keyboard, embedded OCR, reverse and retry, auto orientation, auto-tone, auto page-crop, document editing, auto paper color removal, job separation			



Model	MFP E877dn 40ppm	MFP E877dn 50ppm	MFP E877dn 60ppm	MFP E877dn 70ppm
Product number	5QK03A	5QK03A (Base) + 8EP60AAE (Speed license)	5QK03A (Base) + 8EP61AAE (Speed license)	5QK03A (Base) + 8EP62AAE (Speed license)
Functions	Print, copy, and scan (fax and wireless optional) (all models)			
Print speed (A4 and letter, black, and color)	Up to 40 ppm	Up to 50 ppm	Up to 60 ppm	Up to 70 ppm
Scan speed (A4 and letter, black, and color)	90 ppm/180 ipm, simplex/duplex			
ADF capacity	200 sheets			
Input capacity	Standard: 1,140 sheets; Maximum: 6,140 sheets (all models)			
Advanced workflow features	No			

Get to know the HP LaserJet Managed MFP E826 series

HP LaserJet Managed Flow MFP E826z shown



Series at a glance



Model	Flow MFP E826z 50ppm	Flow MFP E826z 60ppm	Flow MFP E826z 70ppm
Product number	5QK13A	5QK13A (Base) + 8EP63AAE (Speed license)	5QK13A (Base) + 8EP64AAE (Speed license)
Functions	Print, copy, and scan (fax and wireless optional) (all models)		
Print speed (A4, letter and black)	Up to 50 ppm	Up to 60 ppm	Up to 70 ppm
Scan speed (A4, letter and black)	150 ppm/300 ipm, simplex/duplex		
ADF capacity	300 sheets		
Input capacity	Standard: 1,140 sheets; Maximum: 6,140 sheets (all models)		
Advanced workflow features	HP EveryPage technology, ¹⁸ full size keyboard, embedded OCR, reverse and retry, auto orientation, auto-tone, auto page-crop, document editing, auto paper color removal, job separation		



Model	MFP E826dn 50ppm	MFP E826dn 60ppm	MFP E826dn 70ppm
Product number	5QK09A	5QK09A (Base) + 8EP63AAE (Speed license)	5QK09A (Base) + 8EP64AAE (Speed license)
Functions	Print, copy, and scan (fax and wireless optional) (all models)		
Print speed (A4, letter and black)	Up to 50 ppm	Up to 60 ppm	Up to 70 ppm
Scan speed (A4, letter and black)	90 ppm/180 ipm, simplex/duplex		
ADF capacity	200 sheets		
Input capacity	Standard: 1,140 sheets; Maximum: 6,140 sheets (all models)		
Advanced workflow features	No		

Disclaimers and trademarks

Legal Footnotes

1. HP Security is now HP Wolf Security. Security features vary by platform; please see the product data sheet for details.
2. DMIPS comparison based on main system processor core on predecessor comparison; Managed E876/E825/E778/E731/E774/E724 series vs. Managed E800/E700 series
3. Measured using ISO/IEC 24734, excludes first set of test documents. For more information, see <http://www.hp.com/go/printerclaims> Exact speed varies depending on the system configuration, software application, driver, and document complexity.
4. Reverse and Retry technology is only available on Flow-based models.
5. Management of customized delivery options are only available with the optional Workflow accelerator card availability expected in January 2023.
6. Scan speeds measured from ADF. Actual processing speeds may vary depending on scan resolution, network conditions, computer performance, and application software. Measured using standards found at: http://standards.iso.org/ittf/PubliclyAvailableStandards/SC28_Test_Pages/
7. Color panels are optional and availability may vary. Check with your HP Reseller for details.
8. HP voluntarily designs and tests its printing systems to prevent emissions that exceed Blue Angel and EPEAT eco-label guidelines.
9. 100% outer fiber-based packaging and internal fiber-based cushions made from sustainably sourced certified and recycled fibers.
10. 100% of Original HP Toner Cartridges contain between 1-77% post-consumer or post-industrial recycled content. Does not include toner bottles or other products not listed.
11. See hp.com/TonerRecycledContent for list of individual supply percentages for the Original HP Toner supply use of recycled content.
12. HP printer, HP paper and Original HP supply - Blue Angel DE-UZ 219 Emissions Criteria.
13. Dependent upon country setup specifications.
14. HP Planet Partners Program availability varies. For more information, visit hp.com/hprecycle
15. HP's most advanced embedded security features are available on HP Managed and Enterprise devices with HP FutureSmart firmware 4.5 or above. Claim based on HP review of 2021 published features of competitive in-class printers. Only HP offers a combination of security features to automatically detect, stop, and recover from attacks with a self-healing reboot, in alignment with NIST SP 800-193 guidelines for device cyber resiliency. For a list of compatible products, visit hp.com/go/PrintersThatProtect For more information, visit hp.com/go/PrinterSecurityClaims
16. HP Security Manager must be purchased separately.
17. Hardware Integration Pocket Solutions deployed through the Hardware Integration Pocket (HIP) may require additional purchase.
18. HP EveryPage Technology is powered by ultrasonic multi-feed detection.

